

CERTIFICATE OF LOCATION OF GOVERNMENT CORNER

NORTHEAST Corner of Section 27, Township 108N, Range 39W

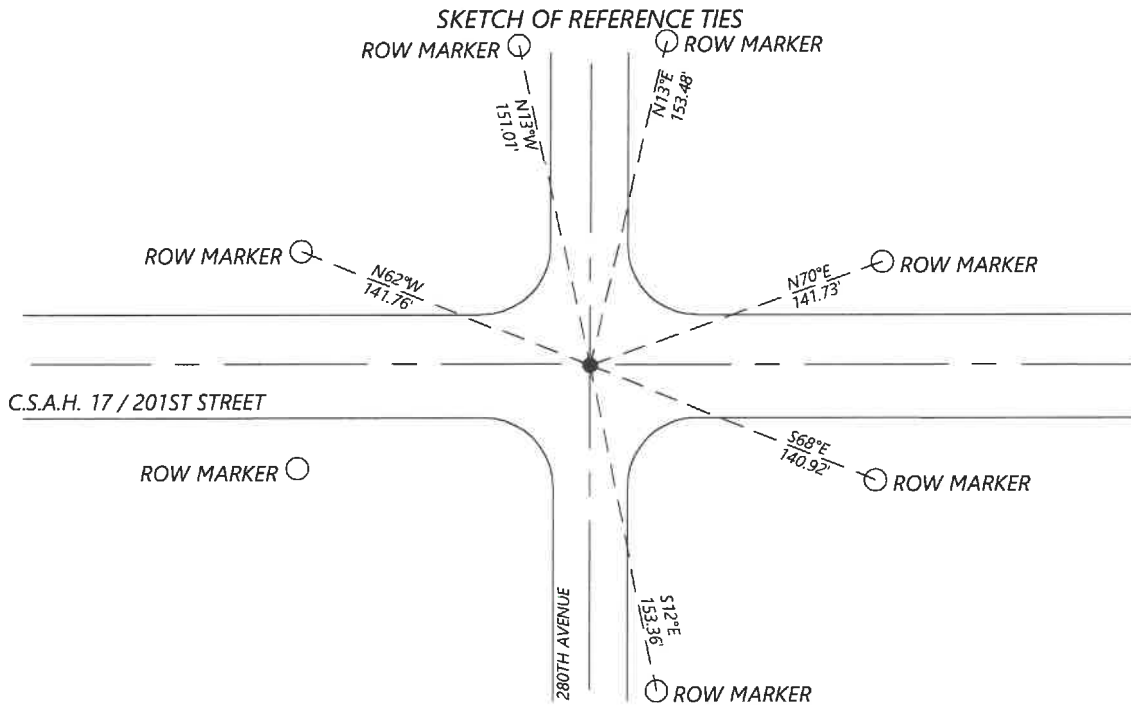
5th Principal Meridian, State of Minnesota, County of MURRAY

At the corner location shown on the sketch:

On 8/28/2020 found a MAG NAIL FLUSH IN BITUMINOUS AT INTERSECTION OF CENTERLINES
DATE

left monument as found lowered monument removed monument (explain)

On _____ placed a _____
DATE



Statement of evidence for this corner location is on back of this page.

I hereby certify that this document was researched and prepared by me or under my direct supervision and that I am a licensed Land Surveyor under the laws of the State of Minnesota.

Signature [Handwritten Signature]

Date 6/17/2021 License No. 45874

Title:

- Land Surveyor Professional Engineer
 County Surveyor County Engineer

OFFICE OF THE COUNTY RECORDER

County of Murray

I hereby certify that this document was filed in the Co.

Recorder's office at _____ M. on the _____ day of _____ A.D. 20 _____

County Recorder [Handwritten Signature: Karen Brown]
 by JUN 22 2021, Deputy

DOCUMENT NO. _____

Statement of Evidence:

Northeast Corner of Section 27, Township 108 North, Range 39 West, 5th Principal Meridian, Murray County, Minnesota.

No GLO Notes.

1924 July, Survey record for Section 27 shows a fence corner 60.0ft NW, 50.5ft NE, 30.3ft SE, and 42.4ft SW.

Undated, Highway Department records show that they dug with a backhoe and found nothing.

2003 April, Road plans for CSAH 17 show the corner assumed at PI station 106+05.99.
Coordinates: N: 205778.77 E: 569291.38

2016 March, A survey in Section 23 by Ben Madsen shows a found PK nail at the corner.

2017 November, A survey in Section 26 by Dennis Esplan shows that a mag nail was found at the corner.

2020 September, Westwood Professional Services searched and found a mag nail at the road intersection. County coordinates: N: 205778.58 E: 569291.55 which fits reasonable well to the road plans. A accepted the found monument and set reference ties.

Analysis of the recovered data, field evidence and survey measurements, indicates that the monument found is the correct perpetuation of this corner. For additional information concerning this corner please contact Westwood Professional Services.